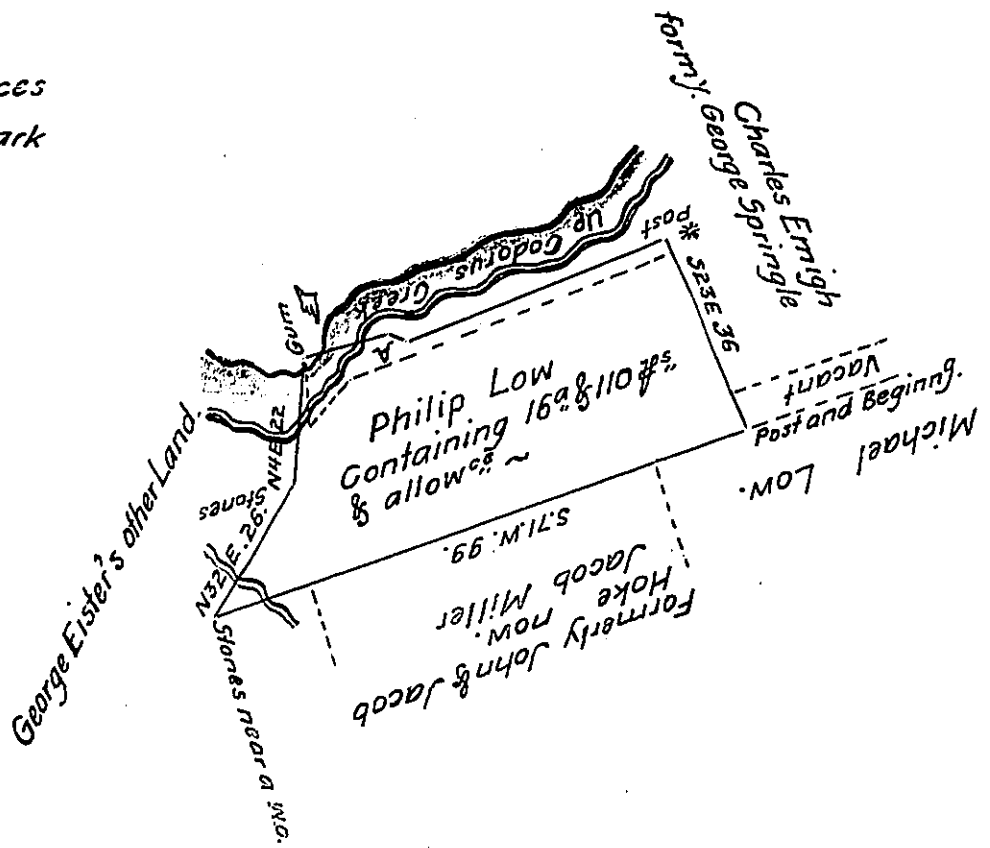


The following are the courses and distances along down Codorus Creek, from the  $\square$  mark to where this \* mark is placed Viz...~

- N. 74. E. 15. 8
- S. 72. E. 3. 3
- N. 69 1/4 E. 49. 2



Situate in Codorus Township York County, Containing as above set forth within the black lines 169 & 110 perches and allowance part of which was Originally Surveyed by William Matthews late D.S. on the 5<sup>th</sup> day of 6<sup>th</sup> Mo 1767. In pursuance of the Application No 1066. Granted to Philip Low bearing date the 1<sup>st</sup> day of September 1766. and said to be Resurveyed by William Kersey late D.S. for George Eister Junr and a piece added. And now on the 12<sup>th</sup> Day of December Anno Domini 1807. the out-boundaries was Resurveyed at the Request of George Eister Junr. aforesaid; who desired us to make return of the Draught. We further beg leave to Represent that Charles Emigh Claims that part where the letter A. is placed within the Dotted lines and Containing 1 1/4<sup>a</sup> and allowance.

per Jacob Spangler D.S.

To Samuel Cochran Esq<sup>r</sup>  
 Surveyor General.  
 Lancaster Pa.

John Eichelberger D.S.

IN TESTIMONY that the above is a copy of the original remaining on file in the Department of Internal Affairs of Pennsylvania, made conformably to an Act of Assembly approved the 16th day of February, 1833, I have hereunto set my Hand and caused the Seal of said Department to be affixed at Harrisburg, this fourteenth day of July 1908

*Henry Howard*  
 Secretary of Internal Affairs.